

Promoted And Developed By Sky Line Estcon(P) Ltd.



# Sky Horizon





## About Us

Sky Line is a time trusted brand in the State Real Estate Sector. With over hundreds of completed projects and lots of customers, Sky Line has established its presence in the fast growing cities of Cuttack and Bhubaneswar and in the scenic towns of Odisha.

Sky Line provides a unique mix of professionalism of a business house and the personal touch owing to its traditional family roots. It is a rapidly growing firm with a strong emphasis on the work life balance that motivates our employees and customers to come back to us for generations.

Our foundation has been fortified by the four pillars of trust – quality, transparent legal procedures, timely project completion and customer satisfaction



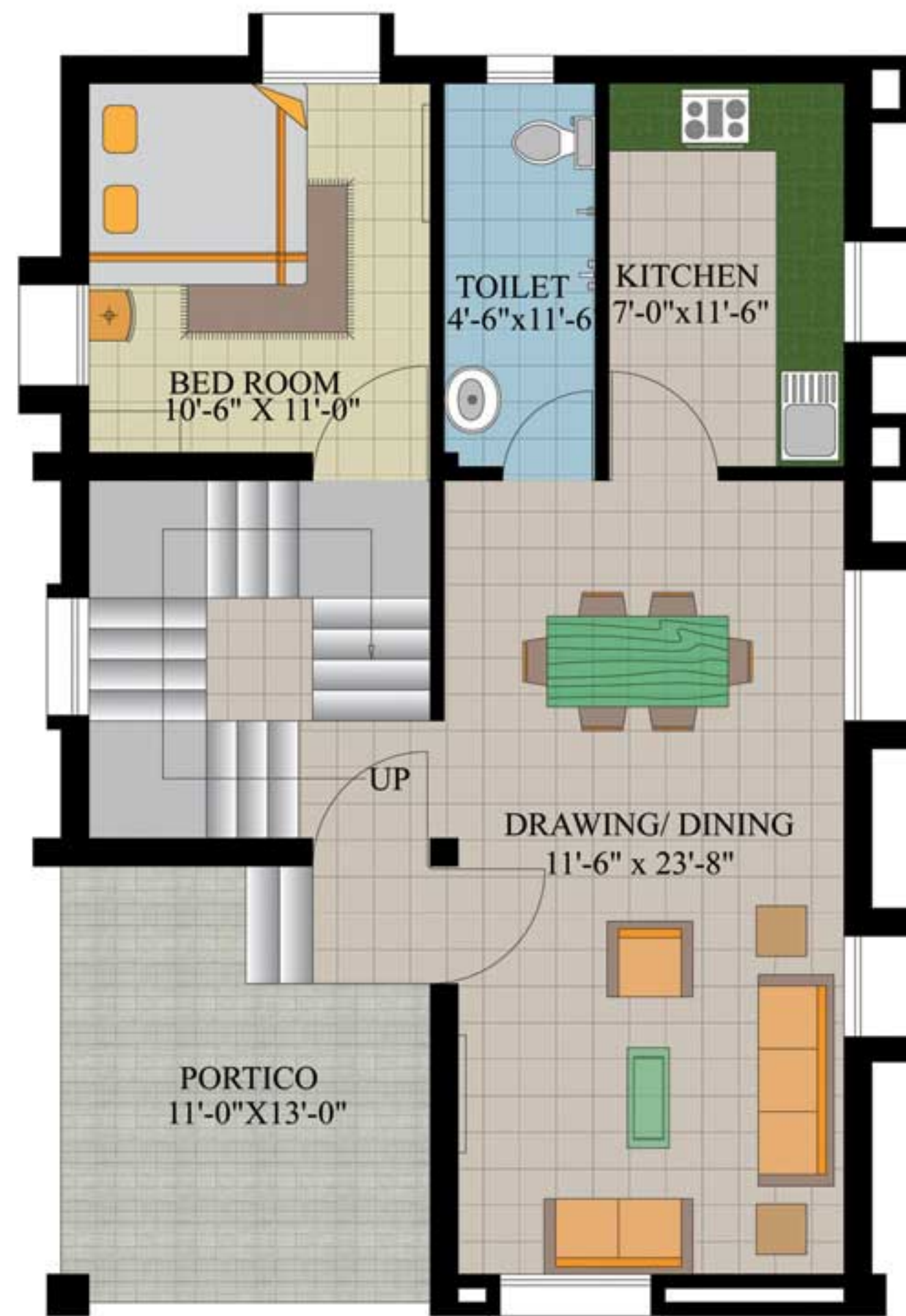


## Sky Horizon

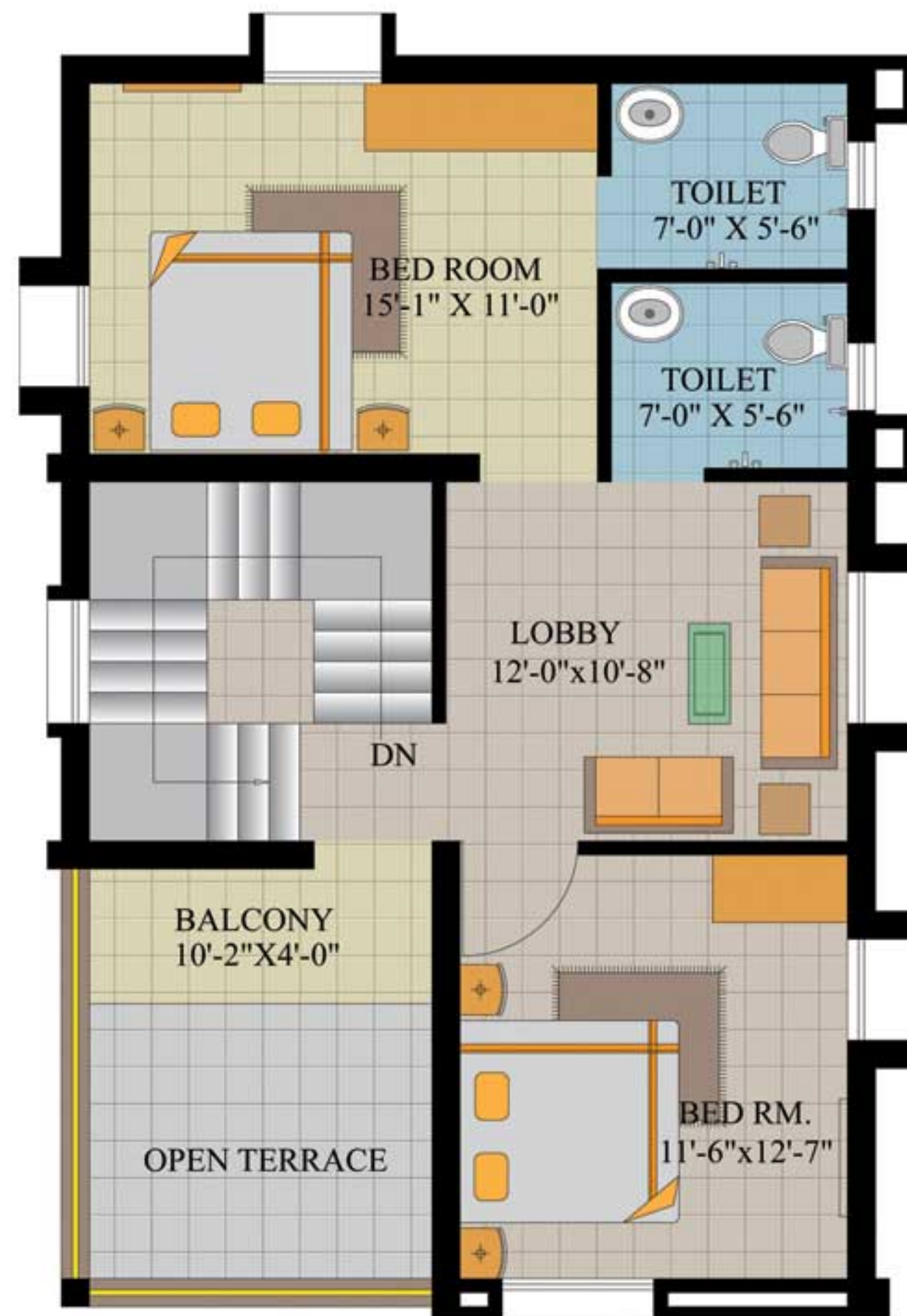
Sky Horizon is an eye-catching residential community standing high and making its own identity in real estate market. Duplexes for sale at Sky Line are designed in an eco-friendly manner to accommodate the native eco-system. Do you think in what way the project supports eco-system? The project holds 70% open space which brings ample ventilation, 40% lush greenery offering the residents a scenic paradise to live in, 30% water bodies bring a cool and delightful experience.







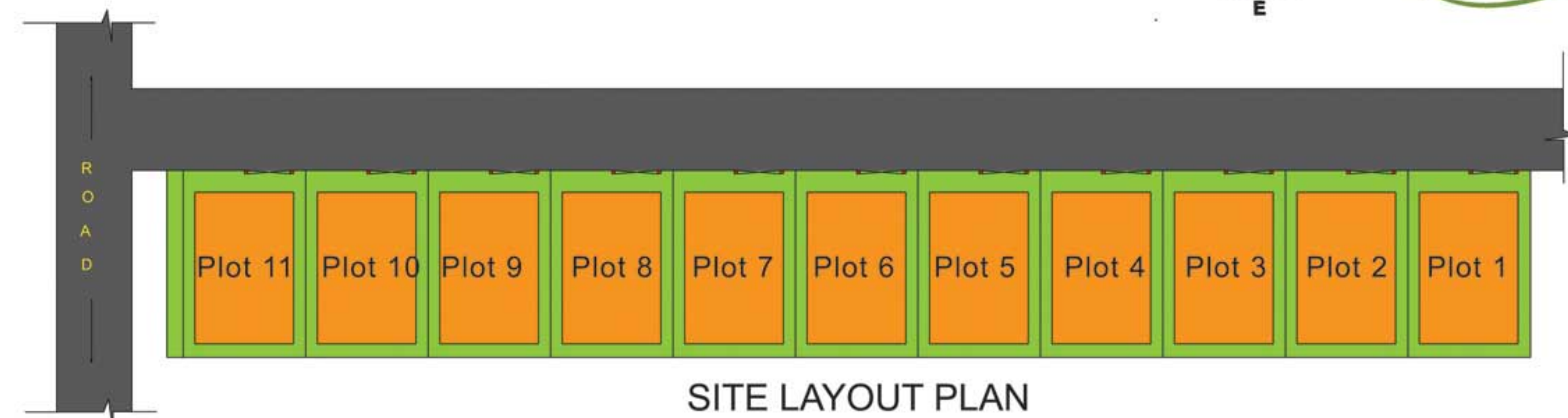
GROUND FLOOR PLAN  
AREA 899 SQFT.



FIRST FLOOR PLAN  
AREA 799 SQFT.

### Facilities :

- 1) Inverter to all individual units.
- 2) Kids play area.
- 3) Indoor games.
- 4) Community hall with Gym.
- 5) 24 hrs. Water supply.
- 6) Land scaped garden.





# Specification :-

- Floor :** All internal flooring will be of superior quality vitrified tiles.  
Bathroom /Toilet flooring will be antiskid ceramic tiles.
- Toilets :** Wall cladding with glazed tiles up to 7'0".  
WC , Washbasin in all Toilets.  
Hot & cold pipe line.  
Premium brand sanitary fittings like Grohe/Jaquar etc..
- Kitchen :** Granite Kitchen Platform with sink.  
Cladding with ceramic tiles above counter.  
Provision for exhaust fan/chimney.
- Electrical :** All electrical wiring will be premium brand fire resistance insulated.  
Wire/Cable concealed with conduit pipes.  
Switches are of modular range.  
Provision of 5 amp. , 15 amp.  
Telephone & Cable point to all flats.  
EPABX System to all units.
- Door & Windows :** Main door is a Teakwood and inter doors are designed flush door.  
Windows are of powder coated aluminum section with glass.
- Paintings :** External – Weather resistant paint.  
Internal - Oil bound distemper.





# Location map:-





FOR FURTHER DETAILS PLEASE CONTACT



**SKY LINE** ESTCON (P) LTD

9/A , Station Square , Backside of Hotel Swosti  
Bhubaneswar , ph : 0674 - 2530079 / 2533379  
Mob : + 91 9437105000  
E\_mail : info@skylinebbsr.com  
skyhorizon15@gmail.com  
web : www.skylinebbsr.com

**Our Upcoming Project :**



**SKY SIGNATURE**

**Architect :**

**srasta**

2nd Floor , Plot No- 270 ,  
Madhusudan Nagar  
unit 4 Bhubaneswar  
Orissa - 751001  
ph - + 91-674-2393394, + 91 9861043625  
E\_mail : srasta\_associates@yahoo.com